

Uniflow® LP Series Reverse Osmosis Systems

The Uniflow LP-Series reverse osmosis systems are engineered for light-commercial applications for pure water.

The pump-less system relies on mains pressure which ensures lower operating costs, less maintenance and simple installation and servicing.

Designed to purify municipal water supplies, the system comes complete with pre and post-membrane filtration and can be optioned as a deionised water system with the addition of final cartridge filtration.

Pressure gauges and dual TDS meter are provided for ease of operation and water quality monitoring.

Systems are supplied standard in wall-mount configuration and can be optioned with a floor-mount stand.

Deionised Water for laboratory and dental use requires an extra filtration stage - See table below for details.

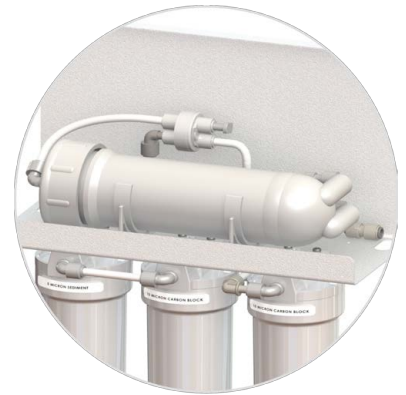


Benefits

- High output pump-less design
- Low maintenance costs
- Corrosion resistant construction
- Pre-assembled and tested
- Quality product made in USA

Applications

- Laboratories
- Dental
- Sterilisation
- Drinking Water
- Deionisation



| Order Code | Description | Membrane | Recovery (%) | Permeate Flow (LPH) |
|------------------------------|---|-----------------|--------------|---------------------|
| FRO-LP-350 | Uniflow LP-Series 1300 Litre RO System | 1 x TF-3012-500 | 40 | 55 |
| FRO-LP-700 | Uniflow LP-Series 2600 Litre RO System | 2 x TF-3012-500 | 40 | 111 |
| Laboratory Deionisers | | | | |
| FRO-LP-350-DI | Uniflow LP-Series 1300 Litre RO/DI System | 1 x TF-3012-500 | 40 | 55 |
| FRO-LP-700-DI | Uniflow LP-Series 2600 Litre RO/DI System | 2 x TF-3012-500 | 40 | 111 |
| Accessories | | | | |
| FRO-LP-S10 | Uniflow LP-Series 350 Floor Stand | | | |
| FRO-LP-S20 | Uniflow LP-Series 700 Floor Stand | | | |

Note: Uniflow LP-Series test parameters: 20 TDS filtered (5 micron) feed water, operating pressure 4.8 bar, with water temp of 25°C